

## Week 3 Binder Activity

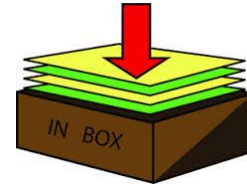
Name: \_\_\_\_\_

**Directions:** Cut and paste, staple, or tape the following 3-Word Root pictures onto the top of each page indicated in your binder, leaving space below for class notes.

### Week 3

**in<sup>-2</sup> = in, into, on, upon,  
within, towards / intensely**

from Latin *in*

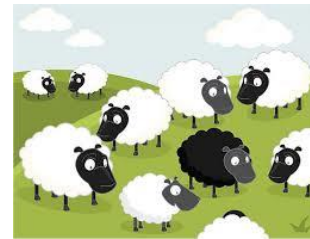


Pre-  
p. 1

### Week 3

**greg- = herd, flock /  
gather assemble**

from Latin *grex, gregare*



BW  
p. 7

### Week 3

**-ive = inclined to, tending  
to, characterized by /**

**NOUN a person or thing characterized by**

from Latin *gratus / gratia*



Suf-  
p. 1